

---

# COMMUNITY UTILISATION OF THE DIABETES SUPPORT PROGRAM AT WAN SMOL BAG THEATRE, SHEFA PROVINCE 2019-2021

JESSICA SEYMOUR, DR CARINE MOREL—BOYCE, ROSE NIRAMBATH, LEIMAKO SIMON, NORLEY JACK,  
EMILY WATSON & EMMA DORRAS

VANUATU 3RD HEALTH RESEARCH SYMPOSIUM

VNPF Conference Center, Luganville, Santo

26-28 October 2022



# INTRODUCTION

- NCD's including Type 2 Diabetes (T2DM) account for 74% of all deaths in Vanuatu and NCD management is a health sector priority<sup>1</sup>
- The Diabetes Support Program was established in 2019 in response to staff requesting additional support for T2DM management
- Wan Smol Bag (WSB) collaborated with medical doctors, WSB clinic nurses and allied health professionals through the Australian Volunteers Program
- Program expanded from supporting staff to broader community

# PROGRAM OBJECTIVE AND STRUCTURE

- Program objective = reduce risk profile for T2DM through evidence-based nutrition and physical activity counselling



*Referral to  
Nutrisen Senta or  
drop-in*

*Initial assessment  
with Nutrisen staff  
incl. food and PA  
diary*

*Follow ups with  
Nutrisen staff incl.  
counselling, BP  
and BSL checks*

*Transition to  
independent  
management  
(ongoing support  
as needed)*

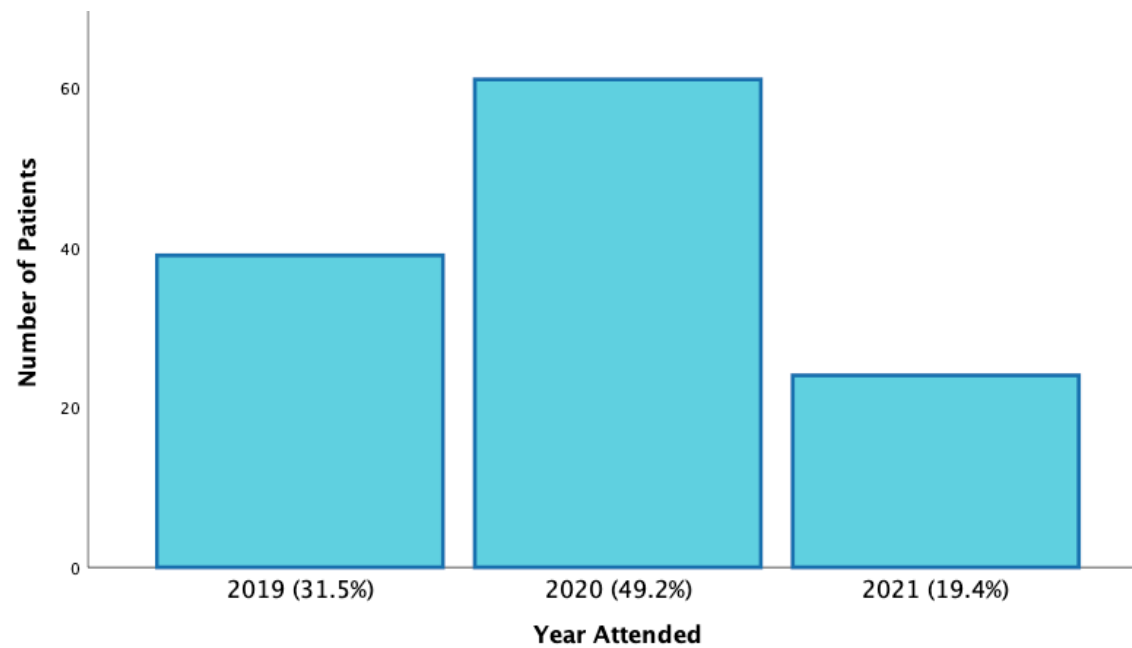
# METHODS

- Study objective = describe community utilization of the WSB Diabetes Support Program
- Retrospective analysis using participant data collected between 2019-2021
- Files were de-identified and collated into a database
- Descriptive analysis was performed (patient demographic and risk factor status)

# RESULTS

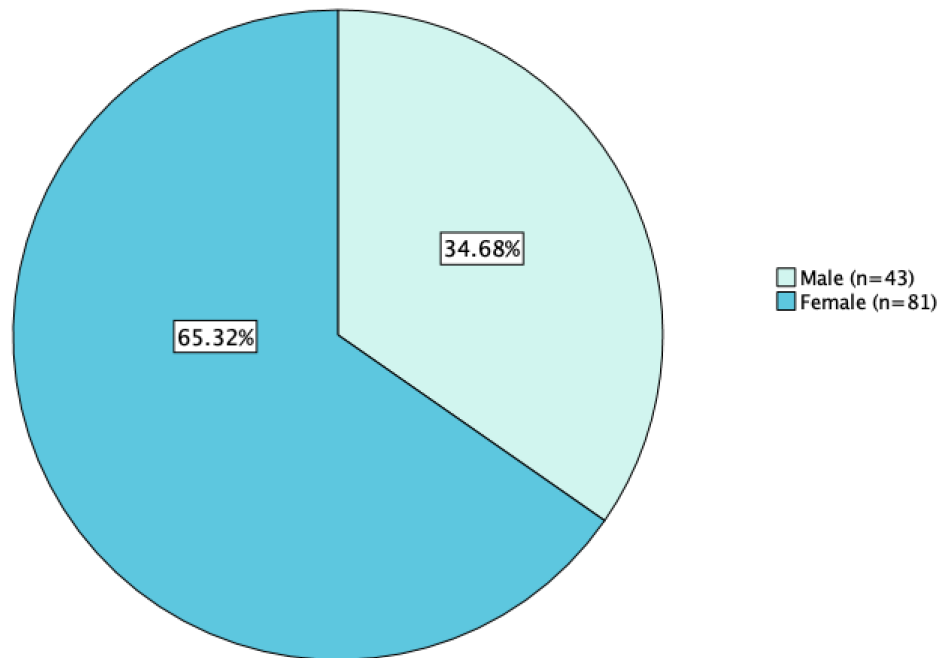
**124**  
**participants**  
**(2019-2021)**

Program attendance by year

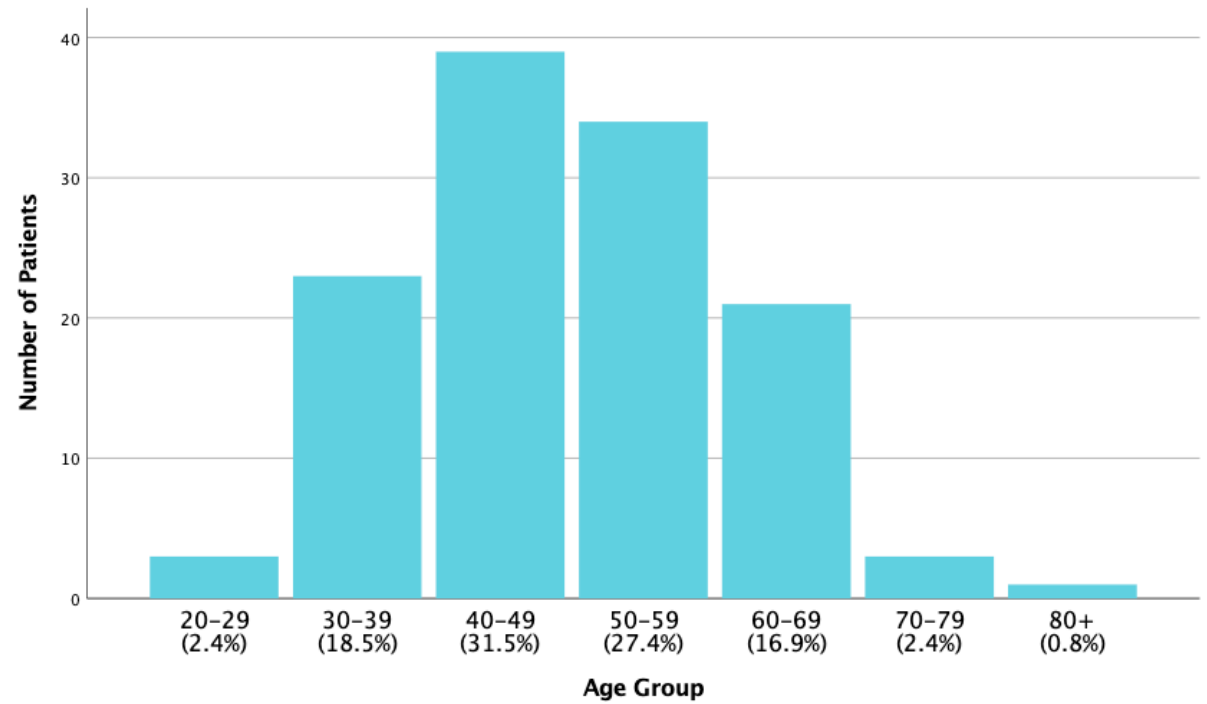


# RESULTS

## Participant sex

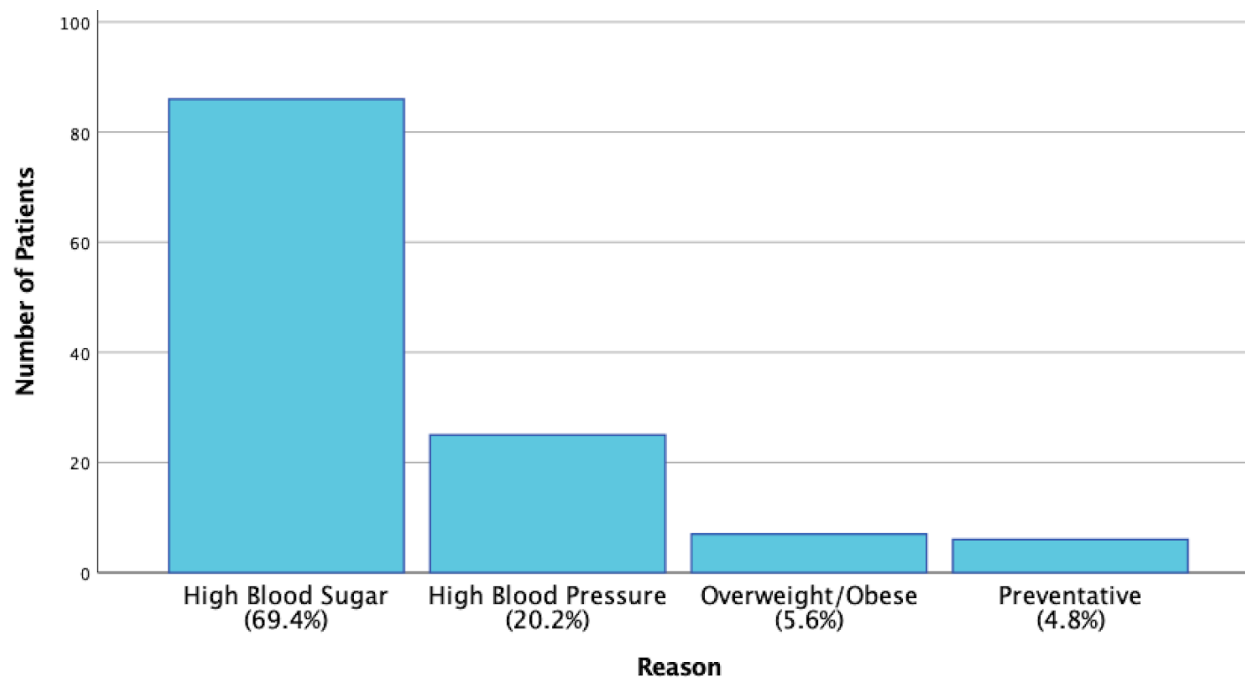


## Participant age

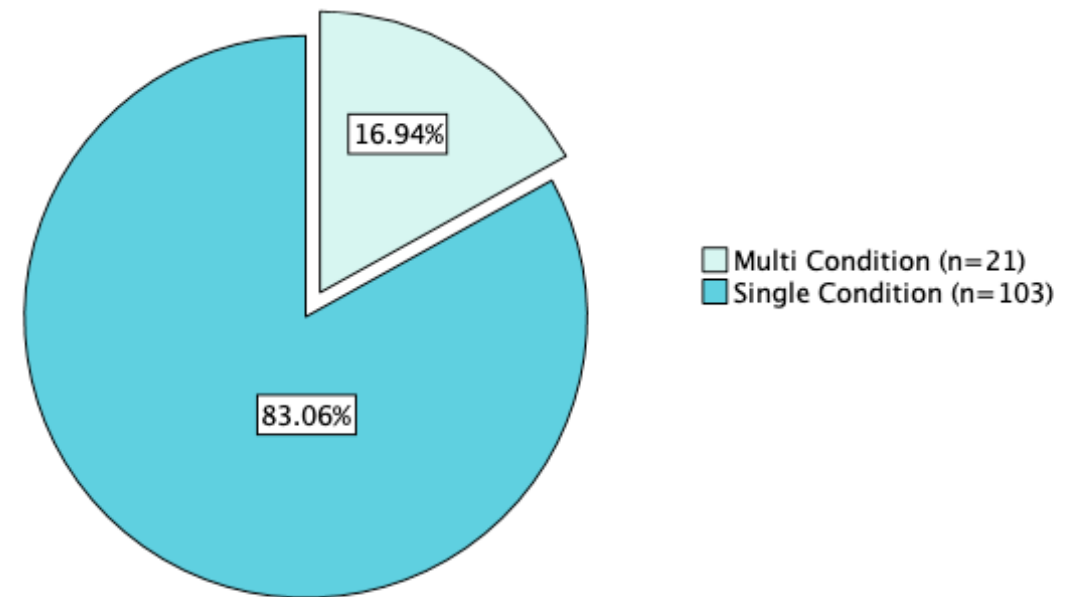


# RESULTS

## Reason for attendance

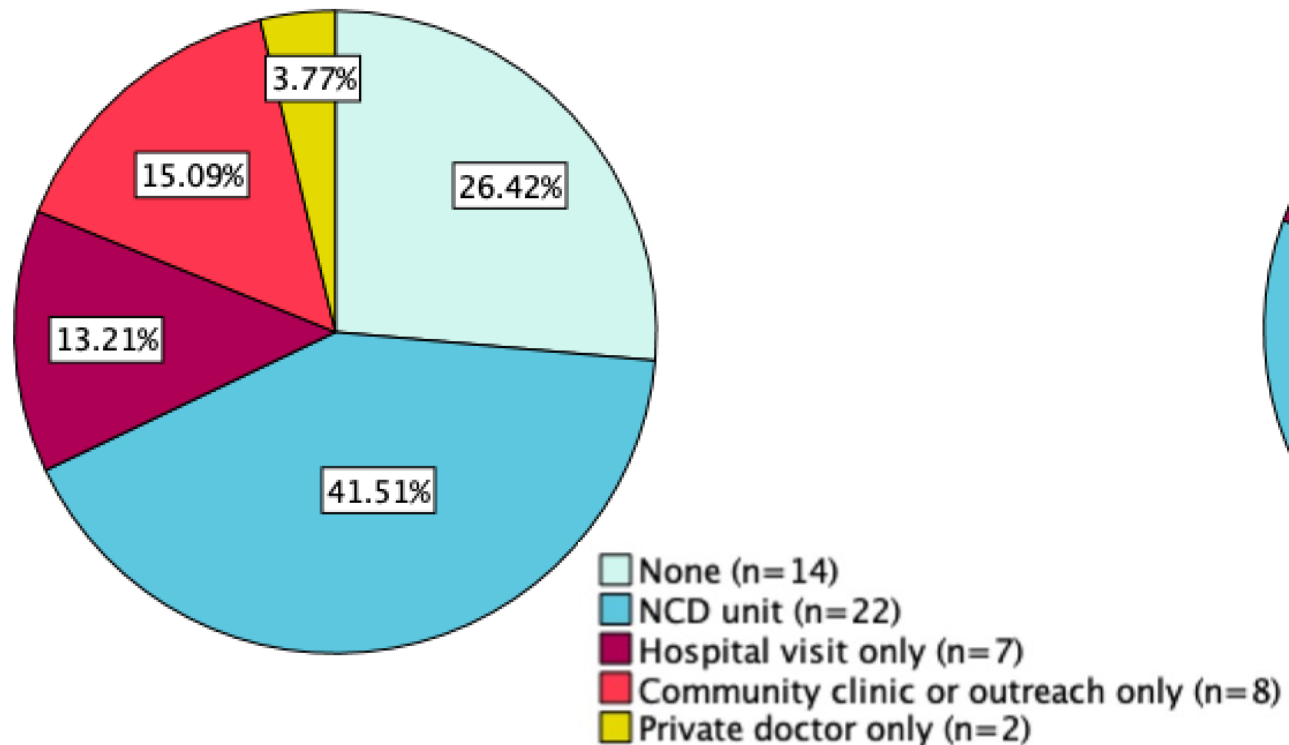


## Number of conditions

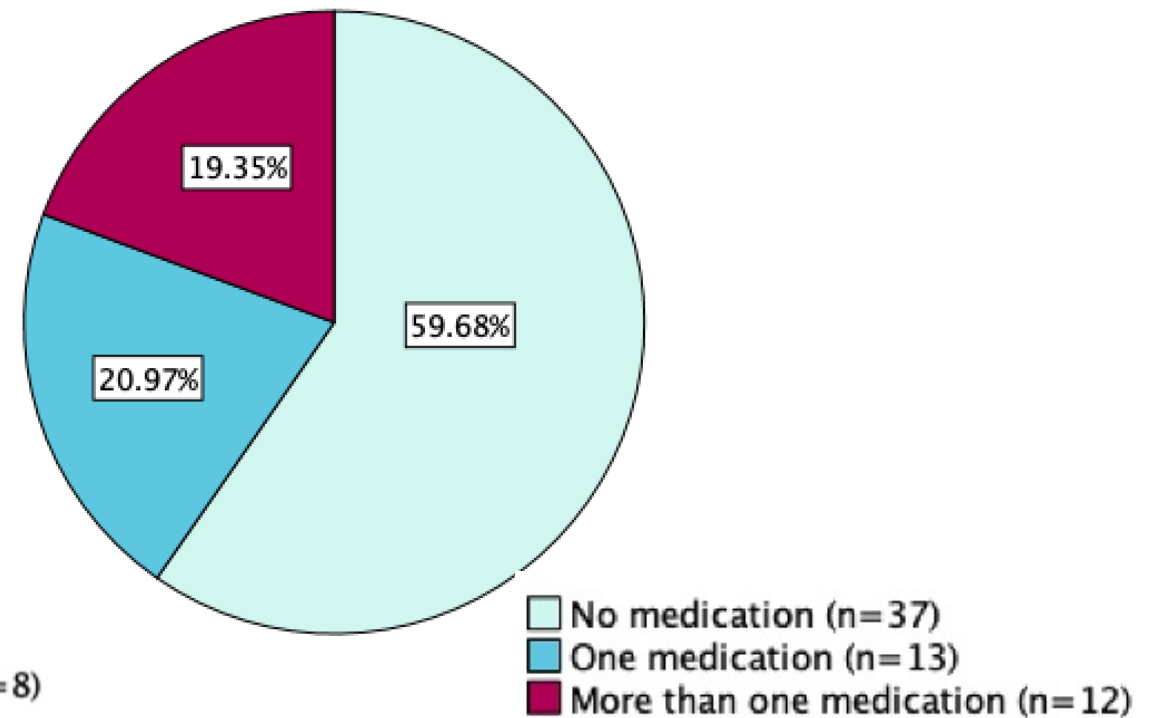


# RESULTS

## Health system engagement



## Medication use





## DISCUSSION

- Participants utilizing the WSB Diabetes Support Program are typically older and female
- Less likely to be engaged with traditional healthcare services
- % multimorbid risk factors suggests typically sicker on presentation
- Less likely to be taking medication
- Community organisations have an important role to play

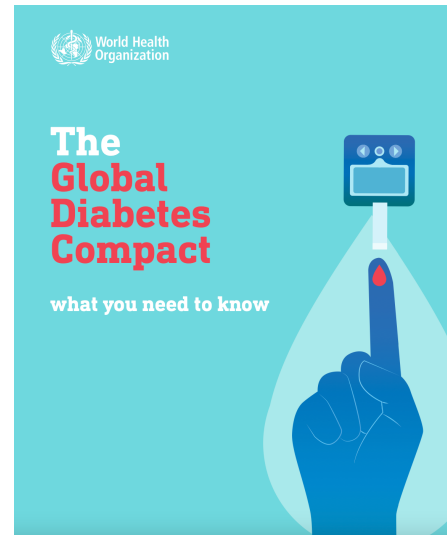
## STRENGTHS OF PROGRAM

- Participant driven and locally led initiative
- Providing a point of access who aren't engaged in traditional healthcare/supports re-engagement
- Integrated and healthcare-community approach to diabetes care
- Offers additional, tailored support for those who are engaged with health services but struggling to achieve health targets

## RECOMMENDATIONS / IMPLICATIONS

- Implementation of quality improvement measures for collecting data
- Further investigate barriers to access and engagement
- Identify opportunities for scaling up
- Evaluate effectiveness of community-healthcare partnered lifestyle interventions in managing diabetes risk

# LINKS TO STRATEGIC OBJECTIVES NATIONALLY AND GLOBALLY



**UNITE**  
Collaboratively unite stakeholders, including people living with diabetes, around a common agenda



**INTEGRATE**  
Integrate diabetes prevention and management in primary health care and universal health coverage



**INNOVATE**  
Close research and normative gaps while spurring innovation

## TARGET 3.4



## REDUCE MORTALITY FROM NON-COMMUNICABLE DISEASES AND PROMOTE MENTAL HEALTH

By 2030, reduce by one third premature mortality from non-communicable diseases through prevention and treatment and promote mental health and well-being.



## Vanuatu MOH NCD Policy and Strategic Plan 2021-2030

### MISSION

Through **multisectoral collaboration** the NCD Policy intends to deliver **a holistic and integrated** package of interventions to both **prevent and control NCD** in Vanuatu.

# ACKNOWLEDGEMENTS

WAN SMOLBAG THEATRE



Australian  
Volunteers

